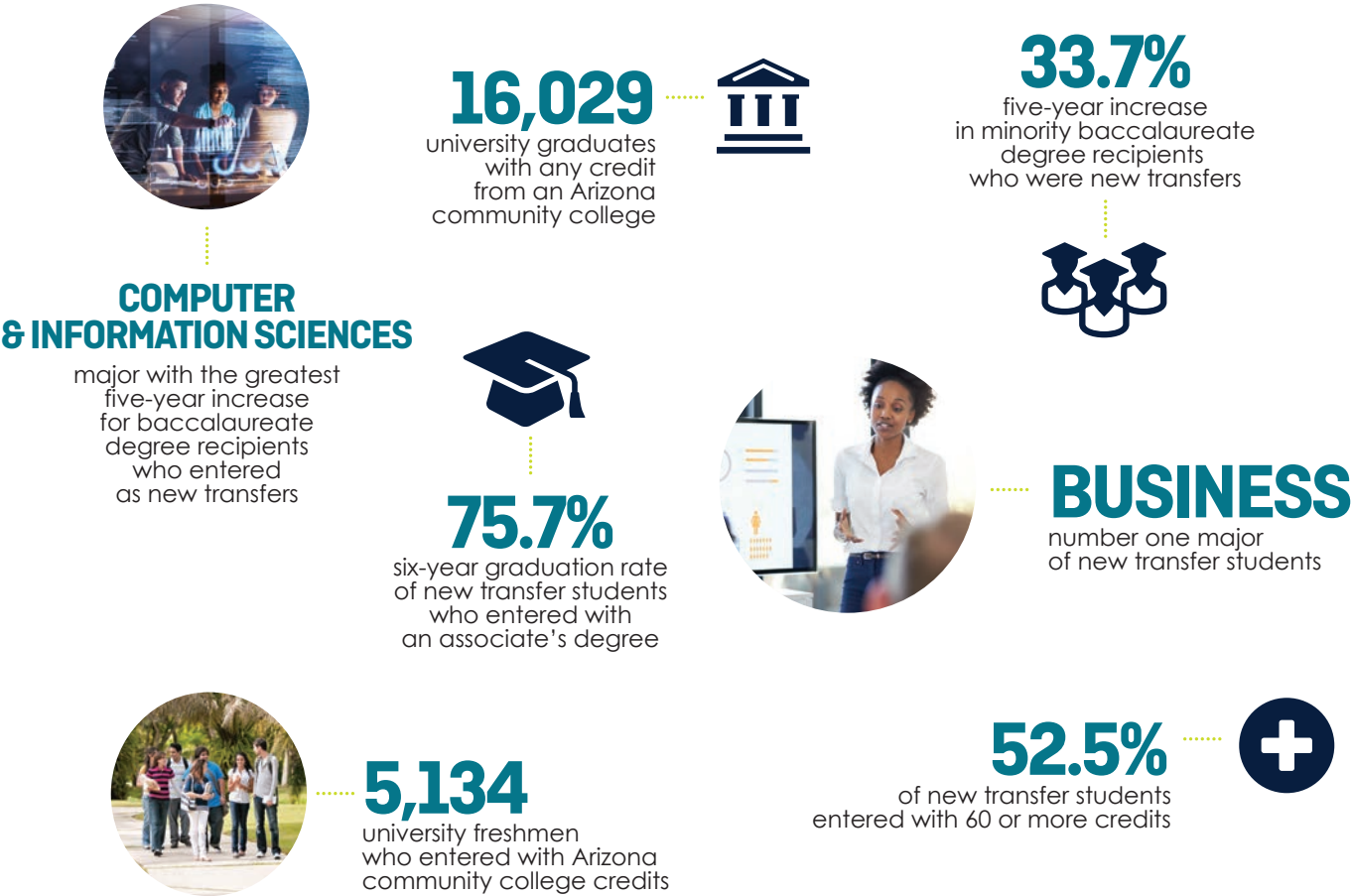


# STATEWIDE FACTS

A snapshot of data related to student transfer among Arizona public community colleges and universities as reported in 2018-2019.



## AZTRANSFER MEMBERSHIP

AZTransfer's organizational structure is built around multi-institutional collaboration throughout all of our committees and work groups. This chart is a list of your institution's membership in these groups.

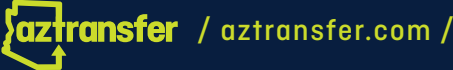
TYPE OF MEMBER	YC	STATEWIDE
Total AZTransfer Members	62	1,819
ATF Faculty	50	1,374
ASSIST	5	68
Academic Advising ATF	2	73
Admissions & Records ATF	1	60
General Education ATF	1	45
Communities of Interest	1	153
15+ Years of AZTransfer Service	6	126



### ABOUT THIS REPORT

THIS ANNUAL PARTNERSHIP REPORT identifies, summarizes, and archives the key contributions made to your institution by AZTransfer staff, with the support of all AZTransfer institutions, in the 2018-2019 academic year.

/ make every credit count /



**Kelly Robles**  
Executive Director / [kelly@aztransfer.com](mailto:kelly@aztransfer.com)

**Cien Luke**  
Program Coordinator / [cien@aztransfer.com](mailto:cien@aztransfer.com)

**Tracy Salter**  
Sr. ASSIST Data Analyst / [tracy@aztransfer.com](mailto:tracy@aztransfer.com)

**Rebecca McKay**  
Sr. Director of Technology & ASSIST / [rebecca@aztransfer.com](mailto:rebecca@aztransfer.com)

**Erin Woodell**  
Director of Marketing & Communications / [erin@aztransfer.com](mailto:erin@aztransfer.com)

/ make every credit count /

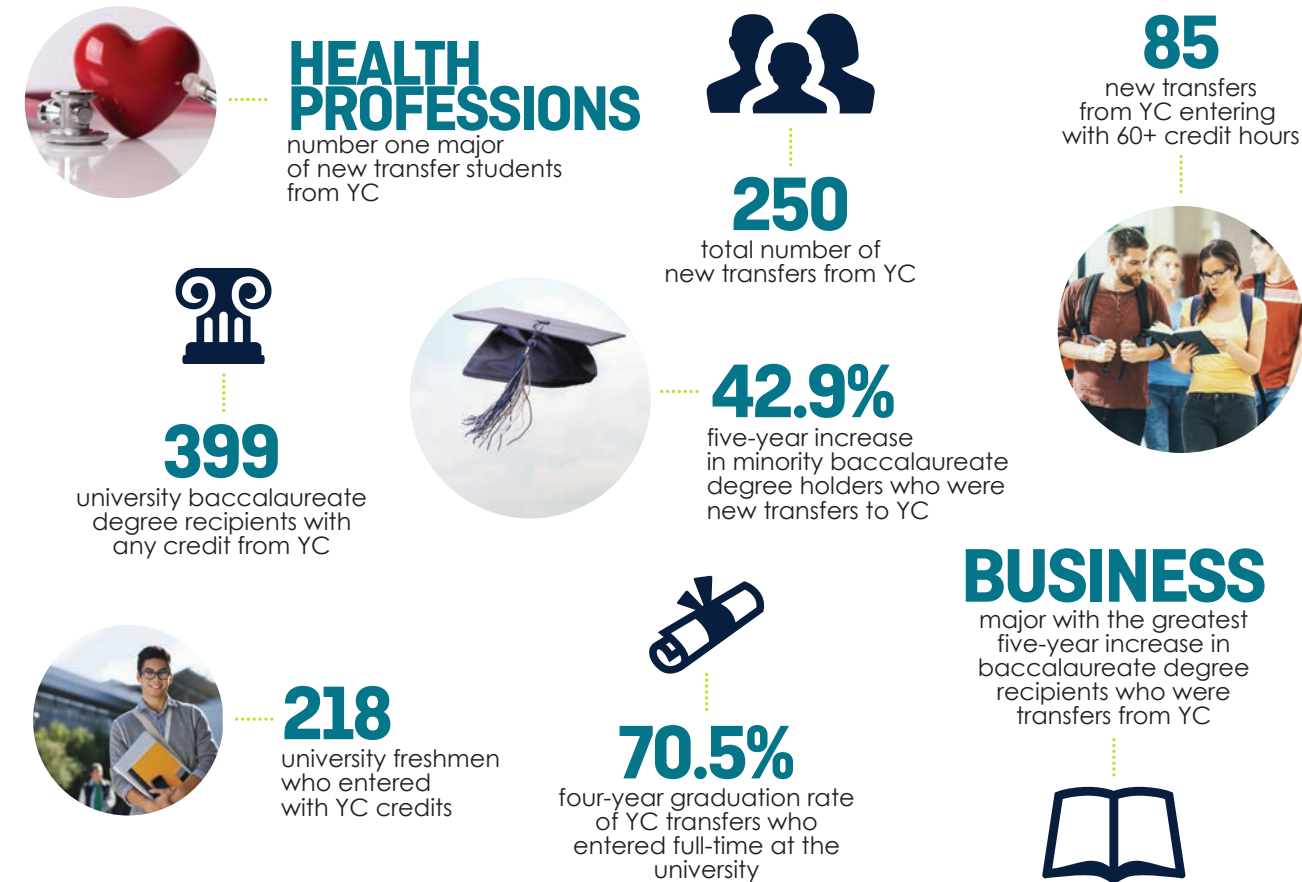
# 2019 PARTNERSHIP REPORT

prepared for yavapai college by aztransfer






## INSTITUTIONAL FACTS

A snapshot of data related to student transfer among YC and Arizona public universities as reported in 2018-2019.



## COURSE EQUIVALENCY REPORT

This report is an overview of course equivalencies in the 2018-2019 academic year. Courses are categorized as direct equivalencies, electives, and non transferrable. The online version of this report also breaks out how many YC courses fulfill general studies requirements at ASU, NAU and UA.

				
<div>95</div> <div>.....</div> <div>YC COURSES WITH DIRECT EQUIVALENCY TO ASU, NAU, AND UA</div>	DIRECT EQUIVALENCY	225	242	184
	ELECTIVE	540	792	428
	NOT TRANSFERABLE	288	21	407
	PENDING	29	27	63
<div>1,082</div> <div>.....</div> <div>TOTAL YC COURSES EVALUATED</div>				

## ARTICULATION TASK FORCES

AZTransfer manages 47 Articulation Task Forces (ATFs) comprised of over 1,800 individual participants who meet annually. Below is a summary of YC participation in ATFs for the 2018-2019 academic year.

36

MEETINGS ATTENDED

3

MEETINGS ABSENT

8

NO PROGRAM

YC FACILITATED MEETINGS

DISCIPLINE	FACILITATOR
Administration of Justice Studies	Angela Poland Patti Schlosberg
Hospitality	Angela Poland Patti Schlosberg
Parks & Rec., Tourism, Nonprofit Management	Angela Poland Patti Schlosberg
Sociology	Angela Poland Patti Schlosberg

YC CHAIRED MEETINGS

DISCIPLINE	CHAIR
Admissions & Records	Shelia Jarrell
Chemistry	Paul Smolenyak
Education	Tara O'Neill
General Education	Suzanne Waldenberger
Hospitality	Barb Waak
Humanities	Suzanne Waldenberger
Parks & Rec., Tourism, Nonprofit Management	Barb Waak
Sociology	Jennifer Jacobson

YC HOSTED MEETINGS

DISCIPLINE	HOST
Administration of Justice Studies	Mike Davis
Admissions & Records	Shelia Jarrell
Hospitality	Barb Waak
Parks & Rec., Tourism, Nonprofit Management	Barb Waak
Sociology	Jennifer Jacobson

AZTransfer Facilitators at the 2018 annual training retreat at Northern Arizona University in Flagstaff, AZ.



AZTransfer Facilitators at the 2018 annual training retreat at Northern Arizona University in Flagstaff, AZ.

## EXAM SCORE COMPARISON REPORT

This report summarizes the top exam score by equivalency category. Institutions review and establish equivalencies for exams each year. If a high enough score is earned on an exam, college credit may be awarded.

	AP ADVANCED PLACEMENT (AP)	CAMBRIDGE INTERNATIONAL EXAMS (CIE)	CLEP COLLEGE LEVEL EXAMINATION PROGRAM (CLEP)	dsst DANTES SUBJECT STANDARDIZED TESTS (DSST)	ib INTERNATIONAL BACCALAUREATE (IB)
TOTAL EXAMS	38	74	33	38	69
DIRECT EQUIVALENCY	24	9	18	3	15
ELECTIVE	6	14	8	3	7
NOT ACCEPTED	8	50	6	28	43
UNDER REVIEW	0	1	1	4	4

## SUMMIT AND WORKSHOPS

AZTransfer offers training opportunities for staff, faculty, and education professionals statewide.

### AZTRANSFER SUMMIT

The 2019 Summit was held April 4-5, 2019 at the We-Ko-Pa Resort in Scottsdale, AZ. This annual conference convenes representatives from all AZTransfer institutions.

**292** TOTAL ATTENDEES

**13** YC ATTENDEES

### PRE-CONFERENCE SESSION: AZTRANSFER TRAINING WORKSHOP

AZTransfer offered a pre-conference training session in conjunction with the 2019 Summit. The training was open to representatives from all AZTransfer member institutions and participants did not have to register for the Summit to be able to participate.

**65** TOTAL ATTENDEES

**1** YC ATTENDEES

### ADMISSIONS AND OUTREACH WORKSHOP

AZTransfer hosted a specialized training workshop for recruitment, outreach, and admissions representatives. The workshop was held July 19, 2018 at the Phoenix Art Museum.

**60** TOTAL ATTENDEES

**3** YC ATTENDEES

### SCHOOL COUNSELORS WORKSHOP

AZTransfer hosted a specialized training workshop for high school counselors. School counselors from across Arizona attended this workshop on August 31, 2018 at the Phoenix Art Museum. Counselors earned four hours of professional development for their attendance.

**65** TOTAL ATTENDEES



Participants at the 2018 Admissions and Outreach Workshop at the Phoenix Art Museum.

## CONTACT INFORMATION

Contact the individuals listed below if you have any questions about AZTransfer.

### AZTRANSFER STEERING COMMITTEE

**Ron Liss**  
Vice President of Instruction and Student Development  
ron.liss@yc.edu  
(928) 717-7778

### AZTRANSFER FACILITATOR

**Angie Poland**  
Academic Support Systems Specialist  
angie.poland@yc.edu  
(928) 776-2177

**Patti Schlosberg**  
Curriculum & Articulation Coordinator  
patti.schlosberg@yc.edu  
(928) 776-2005

### ASSIST STEERING COMMITTEE

**Tom Hughes**  
Director of Institutional Research & Effectiveness  
tom.hughes@yc.edu  
(928) 776-2205