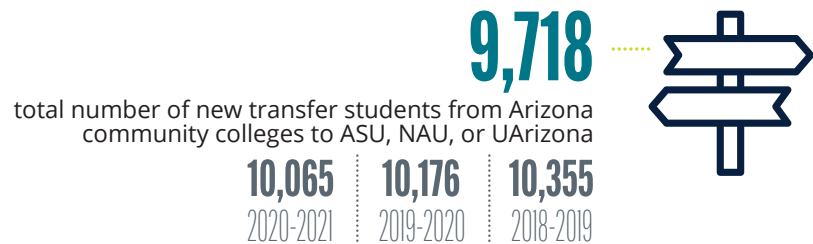
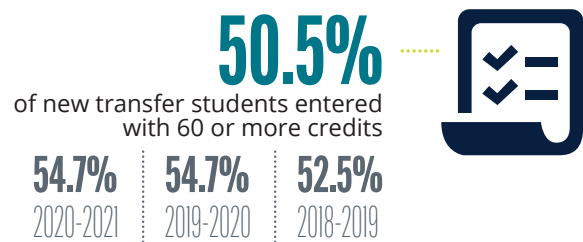


STATEWIDE FACTS

A snapshot of data related to student transfer among Arizona public community colleges and universities as reported in 2021-2022.



HEALTH PROFESSIONS



18.9%

of university new freshmen entered with Arizona community college credits



49.6%

of university graduates had credit from an Arizona community college (2020-2021)



19.1%

five-year increase in minority baccalaureate degree recipients who were new transfers



77.3%

six-year graduation rate of new transfer students who entered with an associate's degree



STATEWIDE MEMBERSHIP

AZTransfer's organizational structure is built around multi-institutional collaboration throughout all of our committees and work groups. This chart lists statewide membership.

TYPE OF MEMBER	2022	2021	2020	2019
Total AZTransfer Members	1,914	1,902	1,870	1,819
ATF Faculty	1,367	1,412	1,390	1,374
ASSIST	61	65	63	68
Academic Advising ATF	81	78	79	73
Admissions & Records ATF	77	71	74	60
General Education ATF	51	48	45	45
Communities of Interest	135	147	150	153
15+ Years of AZTransfer Service	179	123	121	126

aztransfer / AZTRANSFER.COM /



MAKE EVERY CREDIT COUNT

Kelly Robles
Executive Director
kelly@aztransfer.com

Cien Luke
Director, Learning & Program Development
cien@aztransfer.com

Rebecca McKay
Senior Director, Systems Development & Administration
rebecca@aztransfer.com

Erin Woodell
Senior Director, Strategic Communications
erin@aztransfer.com



PARTNERSHIP REPORT

PREPARED FOR PIMA COMMUNITY COLLEGE BY AZTRANSFER



PIMA COMMUNITY COLLEGE PARTNERSHIP REPORT DASHBOARD

Scan the QR code to view digital versions of Pima Community College Partnership Reports from 2015 through 2022.



Snapshots of PCC's transfer data and statewide data



Summaries of PCC's participation in AZTransfer initiatives

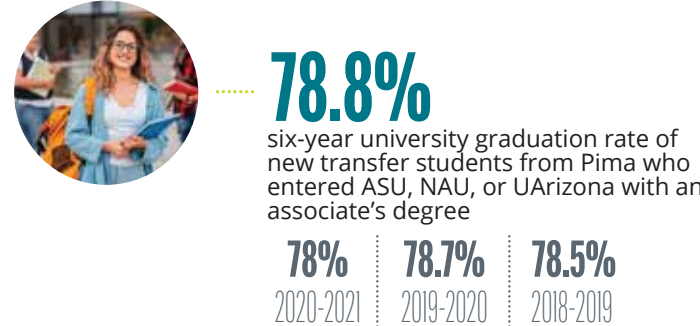
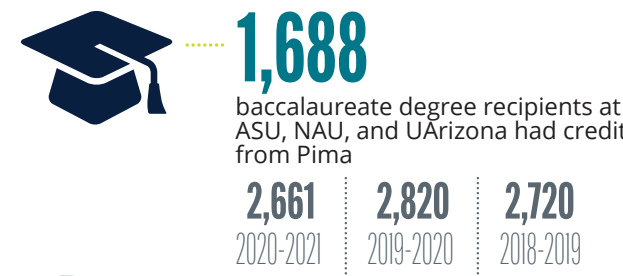
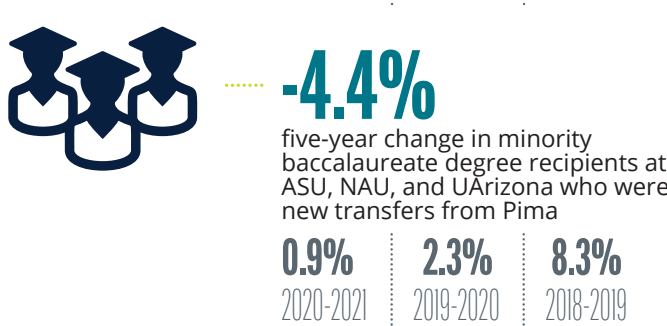
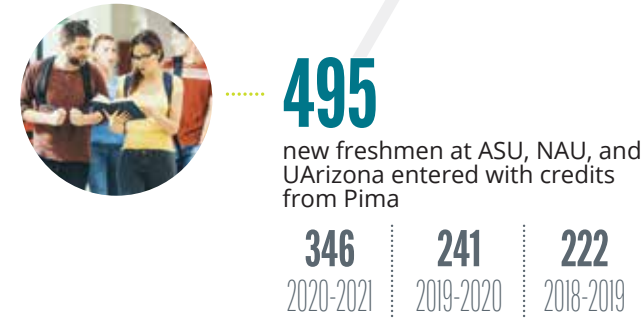
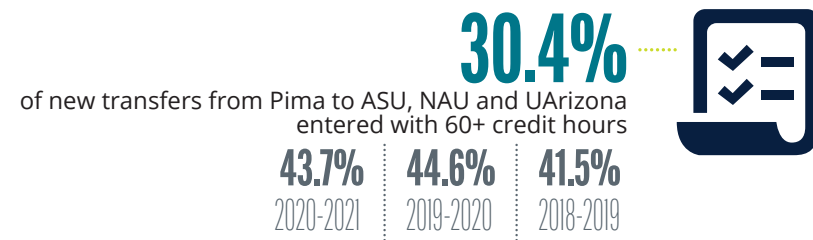
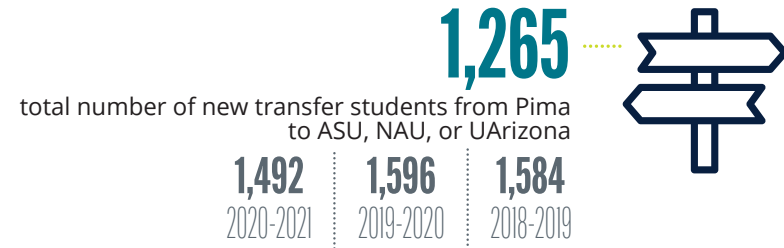


Course equivalency reports, exam score reports, and more!

2022

PIMA FACTS

A snapshot of data related to student transfer among Pima and Arizona public universities as reported in 2021-2022.



PIMA MEMBERSHIP

This chart lists Pima's participation in AZTransfer's various committees and work groups.

TYPE OF MEMBER	2022	2021	2020	2019
Total Pima AZTransfer Members	125	134	125	117
ATF Faculty	94	99	87	87
ASSIST	5	8	7	7
Academic Advising ATF	5	2	3	4
Admissions & Records ATF	6	6	8	5
General Education ATF	2	2	2	2
Communities of Interest	9	11	13	12
15+ Years of AZTransfer Service	8	5	5	5

ARTICULATION TASK FORCES

AZTransfer manages 47 Articulation Task Forces (ATFs) comprised of over 1,900 individual participants who meet annually. This is a summary of Pima participation in ATFs for the 2021-2022 academic year.



PIMA FACILITATED MEETINGS

DISCIPLINE	FACILITATOR
Chemistry	Stacy Naughton
Communication	Stacy Naughton
English	Stephen Ebel

PIMA CHAIRED MEETINGS

DISCIPLINE	CHAIR
Dance	Nolan Kubota
Humanities	Maggie Golston

PIMA HOSTED MEETINGS

DISCIPLINE	HOST
Communication	Tatyana Thweatt
English	Maggie Golston

COURSE EQUIVALENCY REPORT

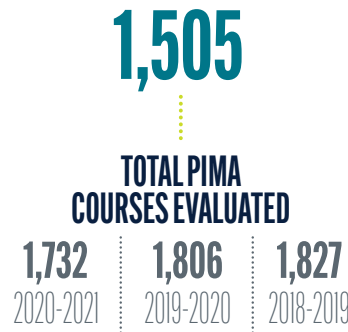
This report is an overview of course equivalencies in the 2021-2022 academic year. Courses are categorized as direct equivalencies, electives, and non transferable. The online version of this report also breaks out how many Pima courses fulfill general studies requirements at ASU, NAU and UArizona.



2022	2021	2020	2019
312	327	333	324
714	817	858	858
452	529	583	588
24	59	32	57



2022	2021	2020	2019
377	395	407	391
1,079	1,268	1,342	1,361
9	12	16	16
37	57	41	59



	2022	2021	2020	2019	2022	2021	2020	2019	2022	2021	2020	2019
DIRECT EQUIVALENCY	312	327	333	324	377	395	407	391	325	323	333	327
ELECTIVE	714	817	858	858	1,079	1,268	1,342	1,361	712	815	853	787
NOT TRANSFERABLE	452	529	583	588	9	12	16	16	439	522	560	614
PENDING	24	59	32	57	37	57	41	59	26	72	60	99

2022 AZTRANSFER SUMMIT

The AZTransfer Summit was held March 24-25, 2022 at the We-Ko-Pa Resort. This is a summary of Pima's participation in this annual networking and professional development event.



PRESENTATIONS BY PIMA FACULTY/STAFF

Pima faculty and staff did not submit any proposals to present at the 2022 Summit. Please encourage your faculty and staff to share their best practices by submitting during the Call for Proposals for our 2023 Summit.

*Figures for 2020 represent Summit registrations prior to its cancellation due to the COVID-19 pandemic.

EXAM SCORE COMPARISON REPORT

This report summarizes the top exam score by equivalency category. Institutions review and establish equivalencies for exams each year. If a high enough score is earned on an exam, college credit may be awarded.

	AP ADVANCED PLACEMENT (AP)	CAMBRIDGE INTERNATIONAL EXAMS (CIE)	CLEP COLLEGE LEVEL EXAMINATION PROGRAM (CLEP)	dsst DANTES SUBJECT STANDARDIZED TESTS (DSST)	ib INTERNATIONAL BACCALAUREATE (IB)
TOTAL EXAMS	38	75	34	37	71
DIRECT EQUIVALENCY	35	11	18	2	19
ELECTIVE	3	15	11	11	15
NOT ACCEPTED	0	45	4	24	29
UNDER REVIEW	0	4	1	0	8

CONTACT INFORMATION

Contact the individuals listed if you have any questions about AZTransfer.

AZTRANSFER STEERING COMMITTEE

Wendy Weeks
Associate Vice Chancellor
wweeks@pima.edu
(520) 206-4654

ASSIST STEERING COMMITTEE

Nicola Richmond
Assistant Vice Chancellor
nrichmond@pima.edu

AZTRANSFER FACILITATORS

Stephen Ebel
Assistant Director
saebel@pima.edu
(520) 206-4901

Stacy Naughton
Assistant Director
snaughton@pima.edu
(520) 206-4903

Jenny Torres
Student Services Specialist
jtorres@pima.edu
(520) 206-4878

Wendy Weeks
Associate Vice Chancellor
wweeks@pima.edu
(520) 206-4654