



ASSIST E-News

Winter 2005

Volume 1, Number 2

Upcoming Activities

Data Submission

**Community
College AY 2003-
2004 due
2/1/05**

**University 21st Day
Spring 2005 due**

3/1/05

**and Fall 2004 End
of Semester Files**

3/1/05

ASSIST Annual Meeting

4/7/05

2:00 PM

at ASU East

Mark Your Calendars: Thursday, April 7

Please reserve Thursday, April 7 to attend the ASSIST Annual Meeting. ASU East is hosting this year's meeting. The ASSIST meeting will be held from 2 PM to 5 PM. The AZ AIR 16th Annual Meeting "Mission: Improve Higher Education" will begin at 1:00 PM on Thursday, April 7 and continue on Friday, April 8 (<http://www.azair.org/agenda.htm>).

This year ASSIST will also offer an opportunity to review the basics of BRIO (now officially Hyperion Intelligence Explorer) using the ASSIST Data Warehouse for new users or those who would like a "refresher." This training session is scheduled for 10 AM to 12 PM, Thursday morning. We need a minimum of six participants to sign up by Monday, February 28, in order to offer this training. The session will be limited to 10 participants so please email ASSIST-Q@asu.edu if you are interested in attending.

Current Projects

Updated ASSIST Data Model and New Tables

The ASSIST data warehouse model has been updated and posted. Individual views are also available for the Community College Data Tables, Community College Code Tables, University Data Tables, and University Code Tables.

http://www.asu.edu/assist/data/ASSIST_Data_Models.html

A new degree table will be added to the model to help remedy some of the inconsistency issues regarding AGECs and Associate Degree data. Institutions have been asked to submit updated files for the table. Data documentation will be added shortly after the table is populated with your data.

Introducing your ASSIST Staff

Who are those unseen people behind ASSIST-Q and the ASSIST Data Warehouse operations? It is reported that that these people do appear at least twice a year to the ASSIST community—the Annual Meeting and the Fall Steering Committee Meeting. Here is a brief profile of the individuals behind the scenes:

Melinda Gebel, ASSIST Project Leader. Currently the Interim Director of Institutional Analysis at ASU, Melinda has been involved with ASSIST since its inception. Melinda's ASSIST duties range from overall leadership and supervision of ASSIST, representing ASSIST at the APASC meetings, and serving on several APASC subcommittees to the more technical, operational activities of loading the university data, monitoring the consistency of the data, and developing reports.

Nancy Dickson, ASSIST User Support and Trainer. With over 27 years of experience at ASU, Nancy's primary assignment is in ASU Data Administration as a Principal Applications System Analyst. Her work in helping establish the ASU Data Warehouse in the early 1990s has provided ASSIST with invaluable experience in data warehousing structure, maintenance, operations and training. Nancy's ASSIST expertise includes student data, BRIO/Hyperion products, and database and training design.

Dan Moore, ASSIST Technical Analyst. Dan came to ASSIST from the State of Arizona in 2001. Dan has over 12 years of administrative and information technology experience in the private and public sector. Dan has experience in project management, database administration, programming code, and business analysis. Dan's technical expertise includes in-depth knowledge of Oracle and Sybase database platforms, C/C++, Delphi, FoxPro, and Visual Basic programming. Dan acts as the technical liaison between the participating institutions and ASSIST. He is responsible for extraction, transformation and loading of the community college data as well as overall database maintenance and improvements. Dan also maintains the ASSIST website and serves on the APASC Quality Team.

Caryl DuBrock, ASSIST Project Coordinator. As the newest member of the ASSIST team, Caryl came on in February 2004. During her first year, she has focused mostly on the ASSIST needs assessment with the design and analysis of evaluation surveys, and increasing communication and awareness of ASSIST with the development of the brochure and newsletter. Caryl is also on the APASC Quality Team and coordinates the ASSIST meetings and reports to APASC.

ASSIST

E-mail:
ASSIST-Q@asu.edu

Website:
www.asu.edu/assist

Mail:
Office of Institutional
Analysis & Data
Administration
ASU
Tempe, AZ 85287-2318

Phone:
(480) 965-2318

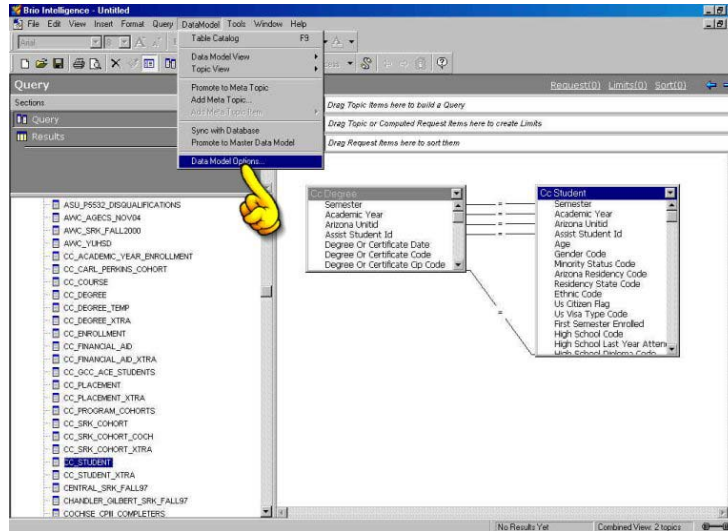
Fax:
(480) 965-1559

ASSIST Quick Tip

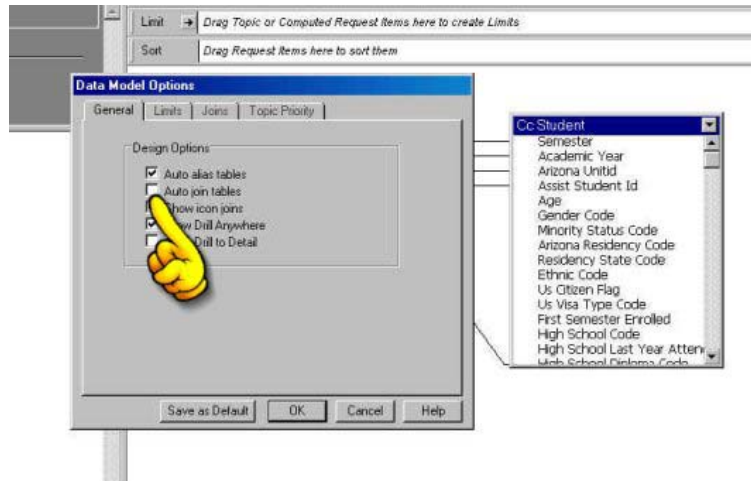
Turning Off the Auto Join Tables Option

Did you know that after having Brio/Hyperion installed onto your desktop computer or browser plug-in, tables will automatically join to all other tables through every possible key column?

How can you turn this feature off? Go to the Data Model menu item. Select Data Model Options as shown in the following example:



Under the General folder tab, uncheck the Auto join tables option as shown in the following example:



Click OK. Remove your tables and then drag your tables back onto the screen. You should NOT see the join lines automatically appear. You will have to manually join columns within your query that is proper for the data you need.

Recent Developments

Survey Results and Brochures Distributed

The ASSIST survey results were distributed in November and December to each group of participants. If you didn't receive it or have any questions concerning the recommendations, please email ASSIST-Q@asu.edu. The ASSIST brochures were distributed to the Steering Committee representatives at the November meeting. If you would like a copy, please check with your institutional representative.

Maintaining Your ASSIST Account

The ASSIST security procedures require monitoring each user account for activity every four months. User accounts with no activity for 12 consecutive months are temporarily disabled. If your account becomes disabled, notify ASSIST-Q@asu.edu if you wish to reactivate.

Defining Comparable Cohorts

John Fulginiti (PCC) has agreed to chair the **Comparative Student Tracking Subcommittee** to address what is the best working definition of a transfer student and comparable cohorts. If you have any ideas on this issue, please pass them on to any of the following subcommittee members: Del Dawley (AWC); Melinda Gebel (ASU); Anthony Restar (UofA); and Glen Snider (EAC).